

User's manual

NL-19

Copyrights

© 2004-2004, Thermopatch bv, Almere, the Netherlands. No part of this publication may be reproduced by any means without the prior written permission of Thermopatch bv, the Netherlands.

Thermopatch and the Thermopatch logo, Thermosteal and Thermocrest are registered trademarks of Thermopatch.

Preface

Dear user,

Welcome to the growing group of Thermopatch users. The product you have purchased has been carefully designed and manufactured to ensure that you, the user, will gain the maximum benefit.

All Thermopatch products are specifically designed to ensure ease of use with particular attention to safety requirements.

Should you discover any fault or damage upon receipt of this product, you should immediately contact your local Thermopatch establishment.

EC - STATEMENT OF CONFORMITY

As manufacturer the company

Thermopatch bv
Draaibrugweg 14-16
1332 AD ALMERE - NETHERLANDS

confirms that the heat seal machine

NL-19

meets the requirements as stated in the EC directives for machine safety- and health rules and is in accordance with the following requirements:

BS EN 292-1:1991
BS EN 292-2:1991
BS EN 60204-1:1991
BS EN 60529:1992
BS EN 418:1992
BS EN 1050:1997
E 55011:1998
EN 50081-1:1992
EN 50082-2:1995
BS 5304:1998

THERMOPATCH B.V.

Contents

EC - STATEMENT OF CONFORMITY	4
1. Introduction	6
1.1 What did you receive?	6
1.2 Illustration of the NL-19	7
1.3 Specifications of the NL-19	7
1.4 Safety	8
1.5 Safety tips	8
1.6 Conditions for guarantee and product liability	9
2. Installation	10
2.1 Transport instructions	10
2.2 Installing the machine	10
2.3 Electrical Requirements	10
2.4 Adjusting the pressure	11
3. How to operate the NL-19	12
3.1 Starting with the NL-19	12
3.2 Working with Heat Seal Materials	12
3.3 Material fusing	13
3.4 Stopping the machine	13
3.5 Pressing pad assembly	13
3.6 Shutting down	14
3.7 Fault diagnosis	14
3.8 Hints, tips and trouble shooting	14
4. Maintenance and settings	16
4.1 Daily maintenance	16
4.2 Periodic maintenance	16
4.3 Cleaning	16
5. Drawings and diagrams	17
6. Design Change	18
7. Guarantee	19
Appendix A. General Layout	20
Appendix B. Control Unit	21
Appendix C. Exploded Diagram & Parts List	22
Appendix D. Electrical Diagram	23
Appendix E. Controller – Electrical Diagram	24

1. Introduction

The NL-19 is a manually operated heat press for printing caps and similar small items. It features a simple robust mechanism and electronic control of operating temperature and dwell time, for accuracy and ease of operation.

The work area of the NL-19 is 15 x 9 cms (6 x 3.6 ins) .

The NL-19 is produced in two versions, nominally 240 Volt AC for the European market and nominally 110 Volt AC for the American market.

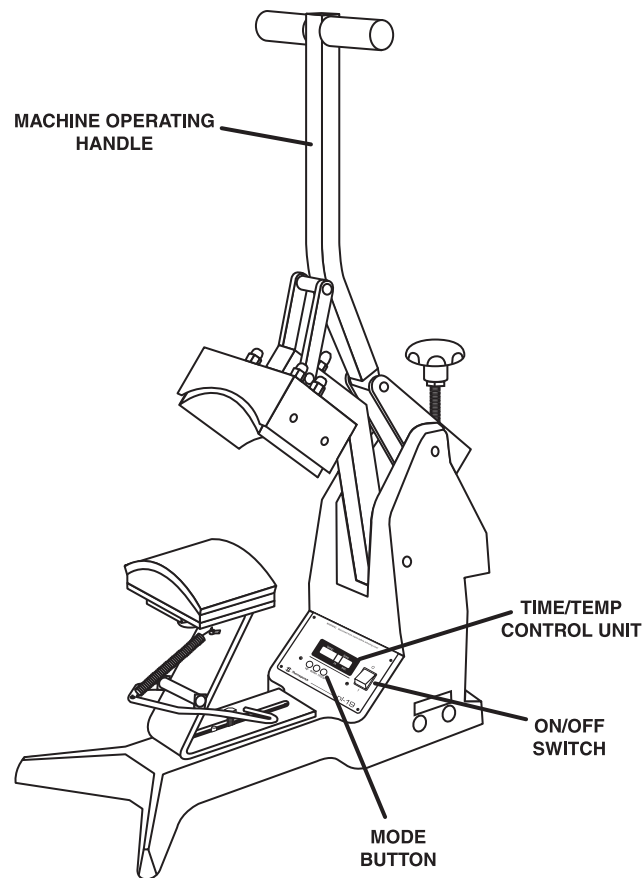
1.1 What did you receive?

The NL-19 has been shrink wrapped, placed in a box, and held in place with foam. The following articles should have been delivered:

- ◆ NL-19 complete with mains cable and plug
- ◆ NL-19 Users' Handbook
- ◆ Any extra items ordered

If there is any damage or any article is missing, please contact your supplier immediately.

1.2 Illustration of the NL-19



NL-19

1.3 Specifications of the NL-19

The NL-19 is a manually operated heat press for printing caps and similar small items.

Specification European machine

Power consumption	500 Watt
Power supply	240 Volts AC
Compressed air supply	7 bar max
Compressed air consumption	60 litres/min
Working temperature	70-235°C
Machine height open	80 cms
Machine height closed	43 cms
Machine width	28 cms
Machine depth	52 cms
Net weight	14,5 kg
Press pad dimensions	15 x 9 cms
Fuses	3.5A
A-weighted noise level	<70dB(A)

Specification USA machine

Power consumption	500 Watts
Power supply	110 Volts AC
Working temperature	160-455°F
Machine height open	31 ins
Machine height closed	17 ins
Machine width	11 ins
Machine depth	21 ins
Net weight	32 lbs
Press pad dimensions	6 x 3.6 ins
Fuses	7A
A-weighted noise level	<70dB(A)

1.4 Safety

The Thermopatch NL-19 has been equipped with various safety features to ensure operator safety.

a Thermal cut-out

A thermal cut-out on the heating element shuts off the power to the element if the temperature exceeds $235^{\circ}\text{C} \pm 15^{\circ}\text{C}$ ($455^{\circ}\text{F} \pm 27^{\circ}\text{F}$).

b Time/temperature controller

The time/temperature controller has a built in facility giving error messages in the event of faults with the element heating and control system.

1.5 Safety tips

Our customer service department has its own service engineers and, if required, maintenance is available. This contract ensures prompt service in the event of machine failure together with additional periodic inspections.

The Thermopatch NL-19 meets the European Legislation standard. Under normal conditions accidents are rare. However listed below are some practical points to ensure your safety.

1. Always switch off the current (and pull plug out of the socket) when undertaking maintenance work or when cleaning the machine.
2. Ensure that there is sufficient space around the machine. Cables and connections must not get jammed. Although the heat radiation of the press is low, there should be enough space for cooling down.
3. Avoid contact with the press element.
4. Do not remove the base board or controller unless qualified to do so - touching internal parts is dangerous and may cause shock hazard. All electrical connections inside covers are live. Never operate the press with any covers and/or guards removed.
5. Protect the mains cable - damage to the mains cable may cause fire or shock hazard. When unplugging, hold by the plug only and remove carefully. Take care that the mains cable does not come into contact with the heat plate (or moving parts of the mechanism) during operation of the machine.
6. **WARNING** – THIS APPARATUS MUST BE EARTHED
7. **CAUTION** – The machine gets hot whilst operating. Take care not to touch any surfaces that are labelled “Caution, this plate is HOT”.

- ◆ Operating ambient temperature range - the operating ambient temperature range is 32 °F – 104 °F, (0 - 35°C) and humidity of 20 - 80%. This heat press is fitted with a thermal cut out to ensure that it cannot operate above 235° ± 15°C (455 ± 27 °F).
- ◆ Machine fuses - type: ultra rapid (FF) fuses 1¼” 250 Vac max. 3.15 amps. (110 Vac max. 7 amps).

1.6 Conditions for guarantee and product liability

Thermopatch guarantees correct working of the machine and its components for twelve months, excluding the cover on the upper plate, the resilient pad of the lower platen and the thermostat. The guarantee period of the temperature sensor and heating element is only six months.

2. Installation

2.1 Transport instructions

The machine comes to you in a box. If you have to replace the machine at a later time, it is recommended to pack it in a similar way in the same box. Please let the press first cool down and lower the handle to the locked position.

2.2 Installing the machine

Take the Thermoseal NL-19 out of the box and put the machine on a worktable near an earthed socket. Ensure that there is sufficient free space around the machine. Also ensure that there are no items near the machine, which are sensitive to heat radiation.

2.3 Electrical Requirements

The Thermoseal NL-19 should be connected to the mains supply (nominally 240V AC electricity grid (220V or 110V alternating current). Use the machine's power cable to provide current. The NL-19 is an earthed machine. Ensure that the supply rating on the machine specification plate corresponds with your local supply and that the correct plug is fitted.

Mains lead

The wires in this mains lead are coloured in accordance with the following code:

Green and Yellow:..... Earth
Blue:..... Neutral
Brown:..... Live

As the colours of the wires in the mains lead of this apparatus may not correspond with the coloured markings identifying the terminals in your plug, proceed as follows:

- ◆ The wire coloured green and yellow must be connected to the terminal in the plug which is marked by the letter E, or by the safety earth symbol coloured green, or green and yellow.
- ◆ The wire coloured blue must be connected to the terminal which is marked with the letter N, or coloured black.
- ◆ The wire coloured brown must be connected to the terminal which is marked with the letter L, or coloured red.
- ◆ **NOTE** - Replacement of the mains cable must be done by a competent service engineer.
- ◆ Heating element - The heating element fitted to this press is rated at 500 Watts. **Never** connect to any outlet or power supply having a different voltage/frequency from that on the machine data plate.

2.4 **Adjusting the pressure**

This press is fitted with a pressure adjusting unit, which enables the heat plate assembly to be raised or lowered by use of a pressure adjustment knob located on the top of the machine:

1. To **increase** pressure or to use thinner materials turn knob clockwise.
2. To **decrease** pressure or to raise the heat plate assembly to enable thicker materials to be used, turn the adjustment knob anticlockwise.

NOTE - Do not adjust the pressure when the machine is clamped shut

CAUTION - Never increase the pressure to the extent of requiring undue force to lower the toggle/heat plate assembly into the lock position, as this will place excessive stress on the press frame, resulting in permanent damage to the press.

3. How to operate the NL-19

3.1 Starting with the NL-19

1 Starting

Plug into your supply outlet and switch supply on.

Please ensure the mains plug is easily accessible to the operator so that in the event of a fault the machine can be unplugged.

2 On/off

Turn on the NL-19; the on/off switch is to the right of the controller. Set the machine controls as necessary. See instructions for adjusting the pressure, and the operation of the time temperature unit.

3.2 Working with Heat Seal Materials

1 Transfer paper

Ascertain from the supplier that the transfer paper and/or the suppliers of the material, that the material to be used is suitable and has been prepared for transfer printing.

2 Heat and time setting

Obtain from the supplier of the transfer paper the recommended temperature, time and pressure settings for the material to be worked on. Approximate settings are usually within the following:

Heat setting 180°C-200°C (350°F-400 °F)
Time dwell setting 10-30 seconds

3 Operating the machine

Wait until the set temperature has been reached, signalled by the temperature on the controller display reaching the required figure. Spread the material to be printed on the worktable, removing all wrinkles. Place the label on the desired location and lower the press head.

Start the sequence by pulling the button to unlock the handle from its vertical position. This will activate the microswitch which starts the timer. When the set time has elapsed, the buzzer sounds. The handle is then unlocked and returned to the vertical position. The head may then be swung aside for unloading and loading.

4 Labels, emblems and transfers

Confirm that the fabric does not have a finish or contain impurities. If necessary, wash the fabric or put the part where the label will be positioned under the press for a few seconds.

Use the following press times:

a Label tapes

Poly/cotton and 100% polyester..... **12 seconds**

b Emblems

Thermocrest, Topline **12 seconds**

Embroidered **20 seconds**

c Transfers

Truflex	12 seconds
Thermomark (transfers on paper).....	5 seconds

Attention ! Some modern fabrics like terylene and various types of nylon cannot withstand the press temperature of 204 °C. If you cannot be sure of the result, use a sample of the same fabric, if possible, to see the result.

5 Removing heat seal material

Because Thermopatch materials must be wash resistant to all industrial washing processes, it is not easy to remove heat seal material. You can act as follows:

3. Put the garments with the label to be removed under the press for about 7 seconds. The glue layer will return to its liquid state.
4. Leave the garment on the plate and remove the label, if necessary by means of a pair of blunt scissors or tweezers.
5. Please take care, the press plate is hot!
6. Repeat this procedure if you cannot remove the label from the garment.

3.3 Material fusing

When the press is to be used for the fusing of susible interlining/heat bonding etc., ascertain from the supplier of the material to be used, the correct settings for time and temperature for the process.

Heat setting	120 – 170 C (250F – 340 F)
Time dwell setting	5 – 30 seconds

The method of operation for fusing is the same as for transfer printing.

During the fusing operation it will be found to be advantageous to lay a piece of PTFE cover material (the same size as the table), over the article being fused. This will act as an anti-stick barrier to prevent strike through of any surplus adhesive from the fusible materials adhering to the heat plate of the press.

Note:

It not advisable that this PTFE cover material be used when the press is being used for transfer printing.

3.4 Stopping the machine

The machine can be stopped at any time by using the “EMERGENCY STOP” button on the top of the press. This will automatically lower the worktable.

3.5 Pressing pad assembly

The pressing pad normally supplied with this machine is silicone rubber. Alternatively a pad of foam with a “Nomex” cover may be supplied to special order. The pressing pad must be maintained in good condition at all times and replaced when showing signs of wear. A worn pressing pad will always affect the quality of printing/fusing. Do not insert items into the machine which would tend to cut the pressing pad, i.e. buttons, pins, press studs or zips.

Important note:

The pressing pad supplied with the machine is of the correct thickness. Using a thicker pad may invalidate your warranty.

3.6 Shutting down

To shut down the machine, turn off the green illuminated rocker switch to the right side of the controller. The handle should be in the up position.

3.7 Fault diagnosis

This machine has a built in fault diagnosis. The display may show the following:

1 Heat fault

If the element of the heat press, or the thermal cut-out go open circuit, after approximately 20 minutes the display will show "Heat fault". If this display is seen, contact your machine supplier immediately.

2 Probe fault

If the probe goes open circuit, the display will show "Probe Fault" immediately. Contact your machine supplier as soon as possible.

3 "CAL" Fault

If "CAL" appears in the controller display the controller will need to be recalibrated. Switch off the machine and contact your supplier for an instruction sheet.

CAUTION - In all fault conditions, switch off the power to the machine and unplug the machine from the electrical supply before contacting your machine supplier.

3.8 Hints, tips and trouble shooting**Transfer printing**

1. Extra care should always be taken to ensure that transfer paper is placed print down onto the article as mistakes will result in the heat plate becoming soiled with ink and spoiling following work.
2. When transfer printing, it may be found advantageous to cover the press pad with paper to prevent strike-through of surplus ink, particularly when printing thin material as surplus print on the pressing pad cover can also strike back on the following work.

Transfer paper/motifs fail to print out correctly**CHECK:**

1. Heat and time dwell settings are correct
2. Article having transfer applied is locked in contact between pressing pad and heat plate
3. Pressing pad is in good condition, is flat and making complete contact over the whole area of the heat plate. See Pressing Pad details.

Ghosting (=double image) of Transfer Prints**CHECK:**

1. Material being used has been correctly heat set for transfer printing
2. Material being used does not shrink during printing process, i.e. measure material before and after printing

3. Transfer paper does not move after printing process upon lift off of the heat plate
4. If possible, use adhesive coated paper, particularly to overcome fabric shrinkage
5. By pre-shrinking of material in press before transfer printing

Inferior press results

Insufficient adhesion of the glue layer

1. Press time too short. Increase the time in steps of 2 seconds and try again.
2. Temperature too low. Check with Thermolabels and increase the temperature, if necessary.
3. Press pad of the lower plate is worn-out. Install a new pad.
4. The coating of the press element is impure or worn-out. Clean with a damp cloth and replace it, if necessary. When replacing the , it is very important that adhesive residue is removed from the heating element. To do this it is necessary to heat up the machine, scrape off the glue remains by using a blunt pair of scissors or a blunt filling-knife. Try to minimise the scratching. After this is done, degrease the heating element and apply the selfadhesive .

Glue layer and/or transfer ink runs

1. Press time too long. Decrease the time in steps of 2 seconds and try again.
2. Temperature too high. Check with Thermolabels and decrease the temperature, if necessary.

Machine failures

Press does not warm up, indicator does not light up

1. The machine is not connected to the electricity grid. Put the plug of the power cable in an earthed socket and switch the machine on.
2. The machine is not connected. Set the switch at the back of the machine to the correct position.

Press does not warm up

1. The sensor is defective. Please contact Thermopatch.
2. The safety thermostat has been activated. Please contact our service department.
3. The heating element is defective. Please contact our service department.

The press time cannot be correctly set

The electronics are defective. Please contact our service department.

There is no signal at the end of the press time

1. The timer is defective. Replace the timer with a new one.
2. The electronics are defective. Please contact our service department.

4. Maintenance and settings

4.1 Daily maintenance

For good press results it is important to keep the press surfaces clean. Therefore, clean the coating of the upper plate with a clean, dry cloth. Do not touch the heating element!

Also clean the rubber of the press shoe daily with a dry cloth. Do not use solvents or other chemical substances to remove impurities. Do not let buttons, zips, etc. come between the plates. In this way, the silicone rubber will remain intact for a long time.

4.2 Periodic maintenance

Put a few drops of oil on the various pivot pins and the pressure adjusting screw every three months.

The lower press pad should be replaced regularly.

4.3 Cleaning

Clean the outside of the machine regularly with a clean, moist cloth. This may conveniently be carried out before starting when the machine is cool. First unplug the machine.

5. Drawings and diagrams

In Appendices A, B, C, D and E you find successively:

Appendix A: General Layout

Appendix B Control unit – Operation

Appendix C Exploded diagram and parts list

Appendix D Electric diagram

Appendix E Controller – Electrical Diagram

6. Design Change

With the policy of constant improvement and/or modification to meet changing conditions, the right is reserved to change the design and/or specifications at any time without prior notification, and therefore specifications may vary and not be in accordance with this manual.

7. Guarantee

This press is guaranteed to be free from defects in material and workmanship (excluding pressing pad assembly) for a period of 12 months from the date of supply.

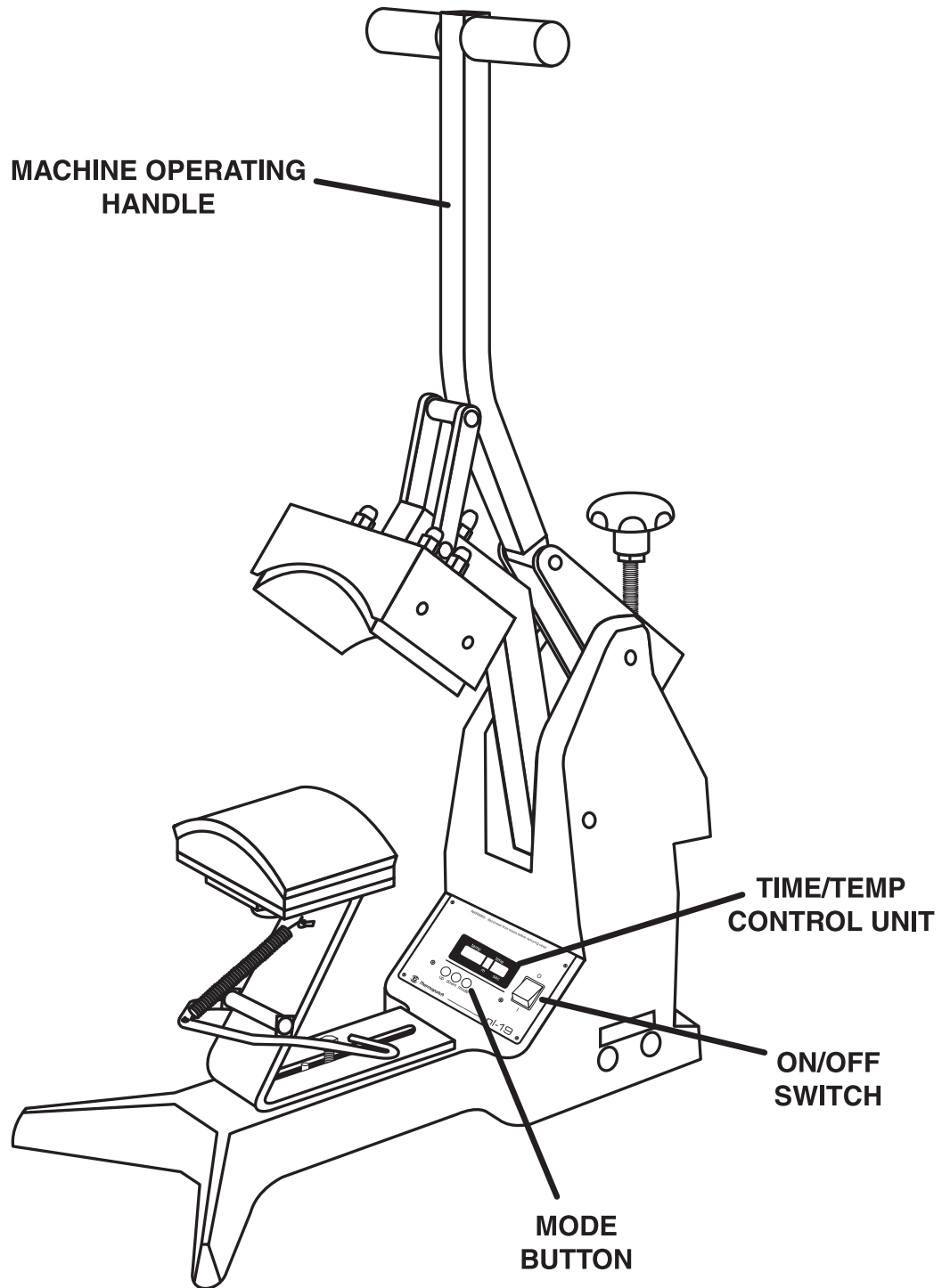
Should in our opinion any part of this press be defective in materials or workmanship, it will be replaced or repaired free of charge, provided that the press has been installed and operated in the correct manner and not subjected to misuse. (This is excluding any travelling and/or carriage costs which will be charged at our discretion.)

A charge will be made for any costs incurred if a reported fault on the press is found to be due to incorrect installation, operation and/or incorrect materials being used. It is the responsibility of the press user to ensure the suitability of the materials operating through the press.

In order for this guarantee to be effective, no return of machine or parts may be made without prior factory authorisation.

The manufacturer shall not be liable for any injury, loss or damage, direct or consequential, arising out of the use or the inability to use the product.

Appendix A. General Layout



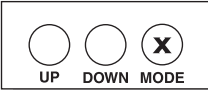
Drawing 5.1: General Layout

Appendix B. Control Unit

Operation of Control Unit, Setting Time and Temperature

(The head must always be in the up position before the controller is set.)

1



UP DOWN MODE

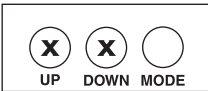
To set the Time:
Press the MODE button once.

2

TEMP.	TIME	
	0	20
	M.	SEC.

The display will now show.

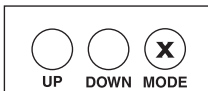
3



UP DOWN MODE

Use the "UP" & "DOWN" buttons
to set the desired time
within the range 0 to 9mins. 59 secs.

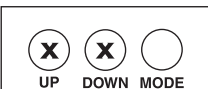
4



UP DOWN MODE

Now press the "MODE" button, this will save
the set time and put the controller into the
set temperature mode.


5



UP DOWN MODE

Use the "UP" & "DOWN" buttons
to set the desired temperature
within the range 70-235oC
(158°F-455°F)

6



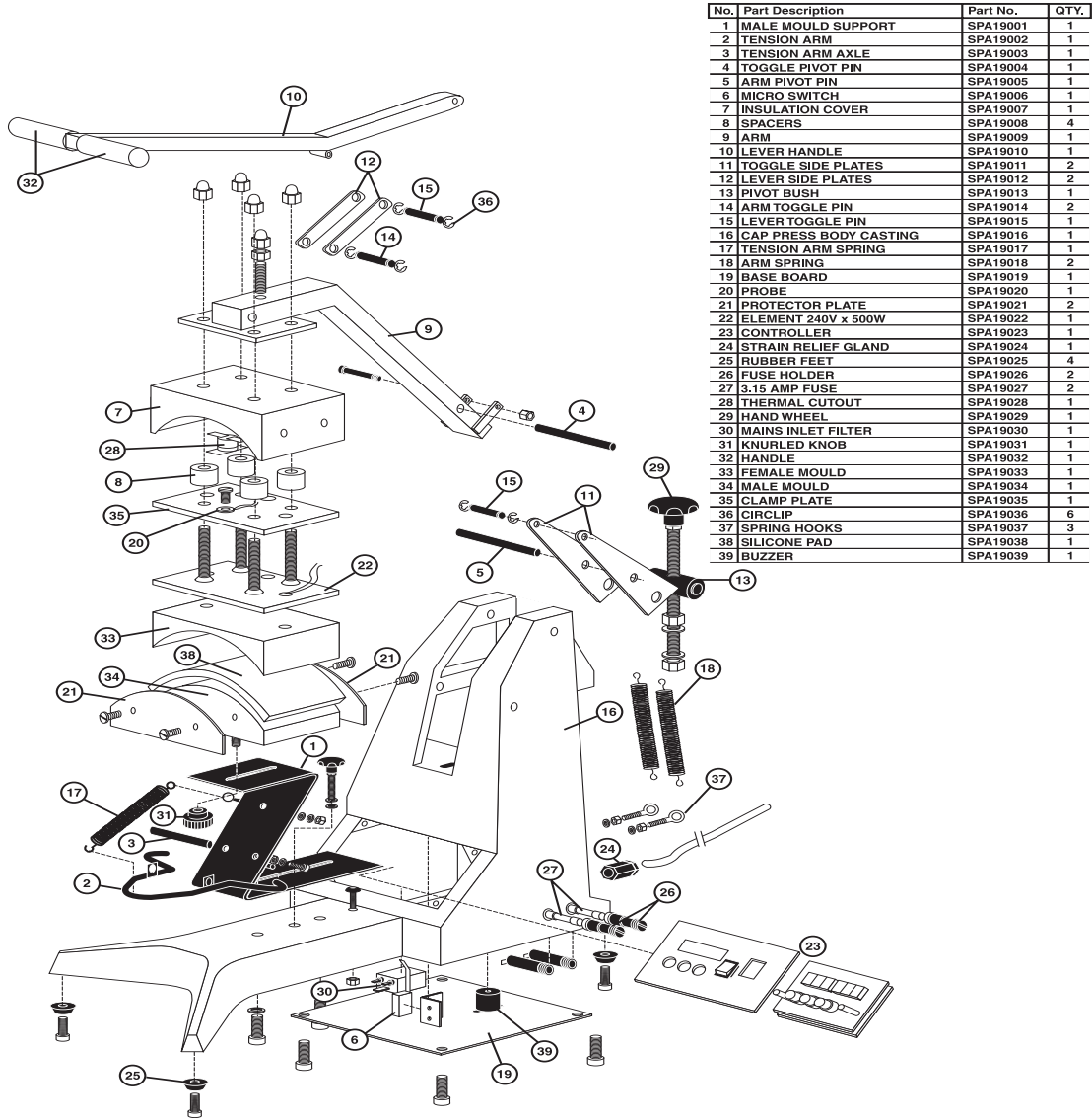
UP DOWN MODE

Press the "MODE" button once, this will save
the temperature and return the controller into
its normal operating condition.

Drawing 5.2: Control Unit

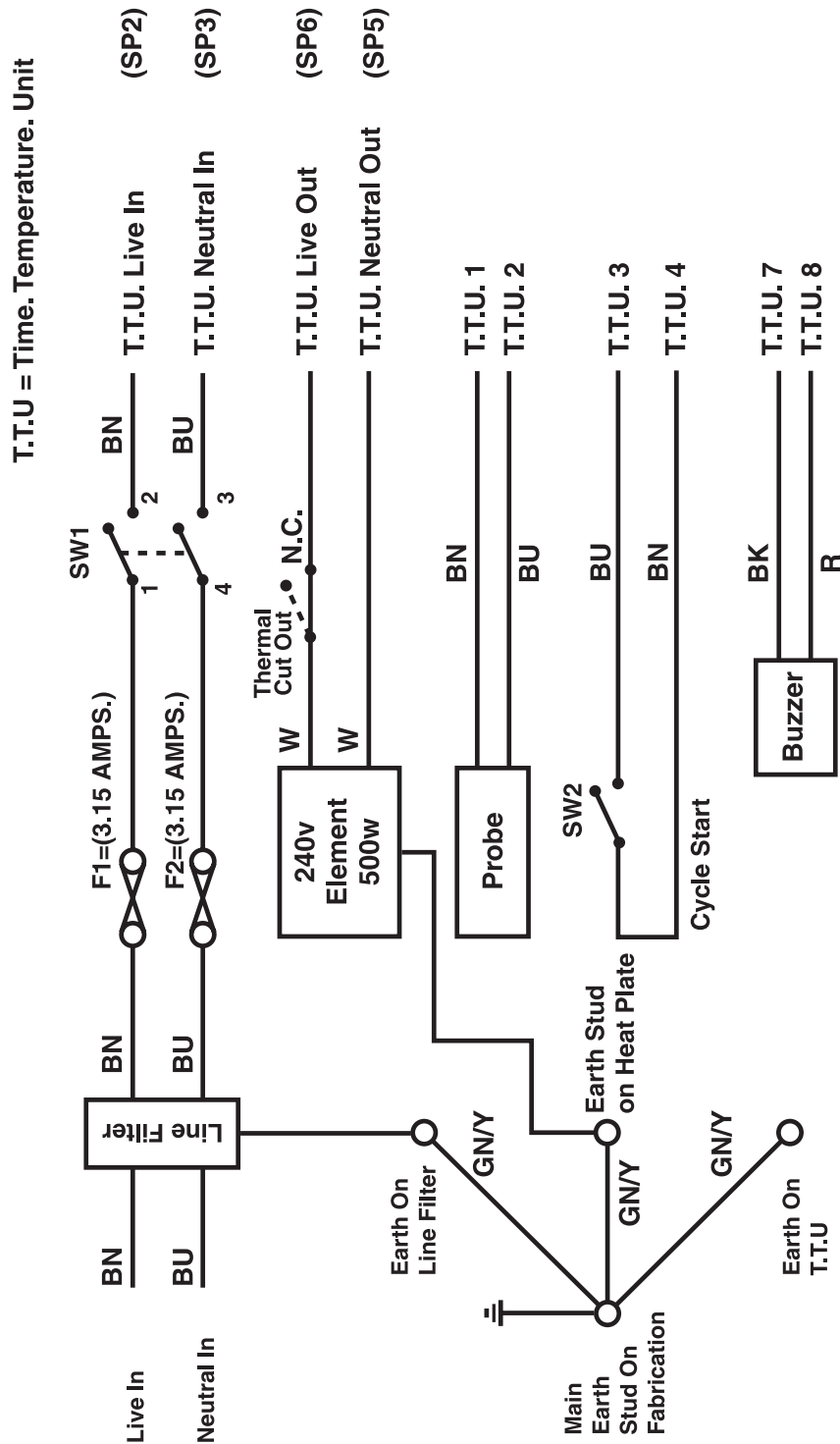
Appendix C. Exploded Diagram & Parts List

5.3 Exploded Diagram and Parts List.



Appendix III
Drawing 5.3: Exploded Diagram & Parts List

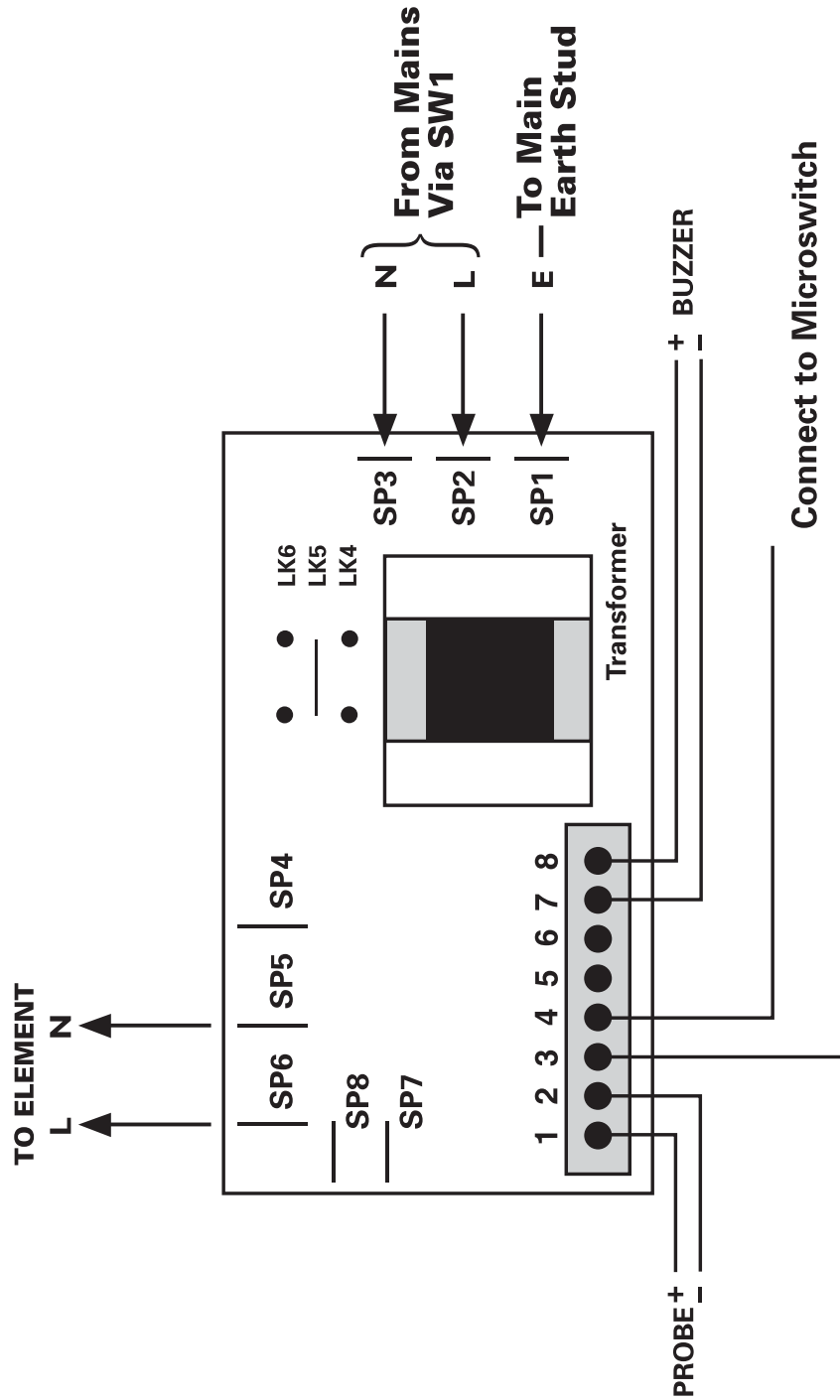
Appendix D. Electrical Diagram



Drawing 5.4: Electrical Diagram

The fuse rating and element power are 240v.
For 110v equivalent see specifications on page 5.

Appendix E. Controller – Electrical Diagram



Drawing 5.5: Controller – Electrical Diagram